



**ALASKA DIVISION OF HOMELAND SECURITY &
EMERGENCY MANAGEMENT**



SITUATION REPORT 22-056 • FEBRUARY 25, 2022

Toll-Free 1.800.478.2337

Anchorage Area 907.428.7000

SEOC 907.428.7100

<p><u>SEOC Preparedness Level</u> Level 1 – Routine Operations</p>	<p>http://ready.alaska.gov</p>	<p><u>National Terrorism Advisory System:</u> <u>Read the NTAS Bulletin here</u></p>
<p><u>Maritime Security (MARSEC)</u> Level: 1-Minimum Appropriate Security Measures</p>	<p>WHO Novel Coronavirus Pandemic (COVID-19): 2019 Novel Coronavirus</p>	<p><u>Alaska Military Installation Force Protection Level:</u> FPCON Bravo</p>

(Significant changes from previous situation reports are in red.)

Significant Issues:

None.

Current Operations:

Interior Winter Storms - Disaster Assistance Centers

Under Governor Dunleavy’s January 3, 2022 declaration of state disaster for winter storms, in-person Disaster Assistance Centers for the state’s Individual Assistance program will open in the following community next week:

Fairbanks – Tuesday, March 1, through Thursday, March 3 from 9:00 am to 5:00 pm at the Fairbanks National Guard Armory.

Online and telephone registration is also available.

Threat Level Changes:

None.

State of Alaska Department of Health and Social Services (DHSS)

DHSS is now leading the State of Alaska COVID-19 Recovery through Department Operations, supported by SEOC and other state departments as required.

For current COVID-19 information, see:

<https://covid19.alaska.gov/>

<https://www.cdc.gov/coronavirus/2019-ncov/index.html>

NTAS BULLETIN

To read current or expired advisories, click the link below:

<https://www.dhs.gov/national-terrorism-advisory-system>

Travel Alerts and Conditions

For current driving conditions dial 511 or link to <http://511.alaska.gov/>

Barry Arm Landslide / Tsunami Risk

For the latest information on the Barry Arm Landslide and Tsunami risk, click here:

[DGGG Barry Arm Landslide and Tsunami Hazard](#)

Recent Earthquakes

USGS Earthquake Information: <http://earthquake.usgs.gov/>

National Tsunami Warning Center: <http://tsunami.gov/>

Alaska Volcanoes

Davidof Alert Level: **Advisory** and Aviation Color Code: **Yellow**

Great Sitkin Alert Level: **Watch** and Aviation Color Code: **Orange**

Pavlof Alert Level: **Watch** and Aviation Color Code: **Orange**

Semisopchnoi Alert Level: **Watch** and Aviation Color Code: **Orange**

For Alaska Volcano updates, go to: <https://www.avo.alaska.edu/>

Air Quality Index (AQI) Advisories

For the most up to date Air Quality Index Advisories:

<http://dec.alaska.gov/Applications/Air/airtoolsweb/Home/Index>

Spills of Oil and Hazardous Substances

The ADEC Spill Prevention and Response page is located at:

<http://dec.alaska.gov/spar/ppr/spill-information/response/>

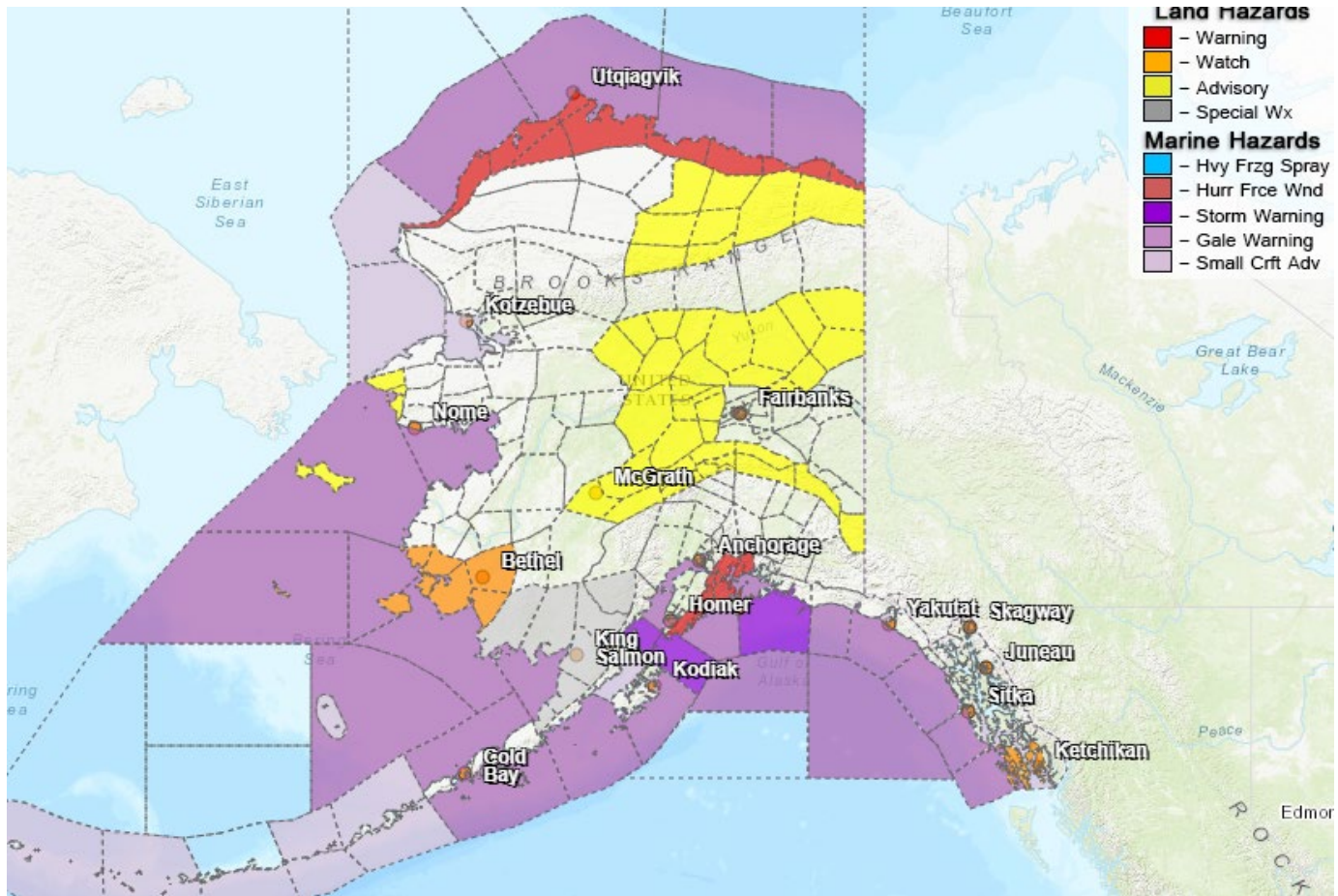
Alaska Cyber Security Information

State Employees may sign up for cyber security notifications and alerts at

<https://oit.alaska.gov/security>

CISA-Cybersecurity Services and Tools: www.cisa.gov/free-cybersecurity-services-and-tools

Significant Weather:



Blizzard Warnings for Western and Northern Arctic Coast and Central and Eastern Beaufort Sea Coast are in effect until tomorrow evening.

Winter Weather Advisories for Upper Koyukuk Valley, Yukon Flats and Surrounding Uplands and Central Interior until noon tomorrow, for Northeastern Brooks Range until 6:00 pm tomorrow and for St Lawrence Island and Bering Strait Coast until 6:00 am Saturday morning.

High Wind Warning for Turnagain Arm and Higher Elevations of Anchorage Hillside until 5:00 pm today.

High Wind Watch for Dixon Entrance to Cape Decision Coastal Area: Southern Inner Channels and Kuskokwim Delta is in effect until tomorrow morning.

Wind Advisory for Upper Kuskokwim Valley, Denali and Eastern Alaska Range until 6:00 am tomorrow morning.

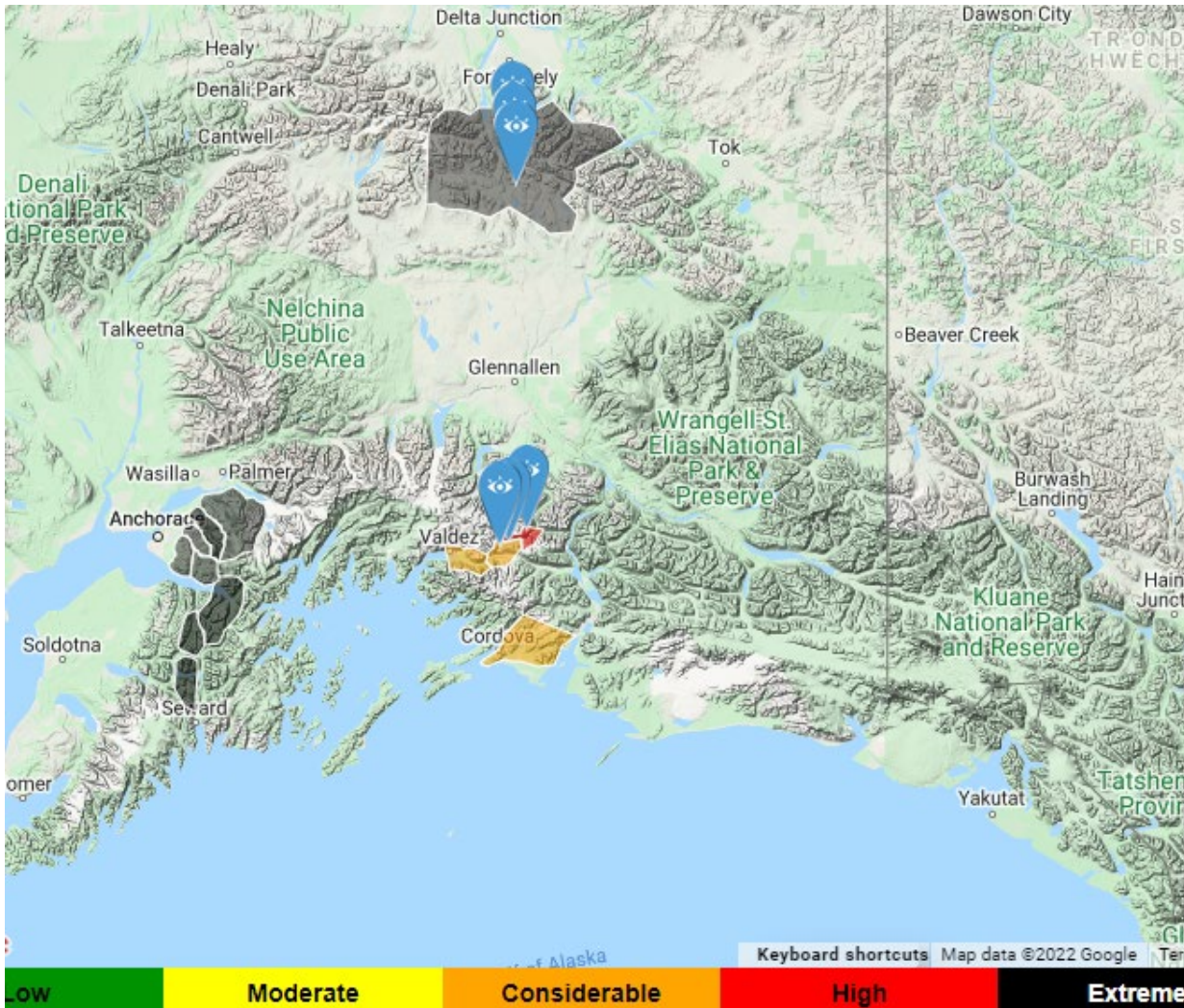
Special Weather Statement for Western Prince William Sound for a long duration precipitation event through Saturday morning.

Special Weather Statement for Bristol Bay for strong winds across the Bristol Bay Region through early Saturday morning.

Avalanche Warning for Western Chugach and Kenai Mountains in and around Girdwood, Portage, Moose Pass, Turnagain Pass, Summit Lake, Lost Lake, and Seward until this evening.

For more information and the most current weather, Watches / Warnings / Advisories go to: <http://www.weather.gov/arh>.

Avalanche Forecast:



There are areas near Valdez and Girdwood with High Risk, Valdez and Cordova with considerable risk, and near Haines with moderate risk.

Check the Avalanche Forecast Center closest to your area for the most up to date information on avalanche potential. <https://alaskasnow.org> or <https://www.weather.gov/afc/avalancheweather>

The Next Situation Report: will be 28 February 2022. A significant change in the situation or the threat level will prompt an interim report.

This report is posted on the internet at <https://ready.alaska.gov/sitrep>. To register for email distribution, go to <http://list.state.ak.us/mailman/listinfo/dhsem.situation.report>. Direct questions regarding this report to the SEOC at 907-428-7100 or seoc@alaska.gov